

# Amy's

needlework supplies & classes

JUN/JUL 2017

what's inside this month

## WE'RE ALL A BUZZ! YOU WON'T BEE-LIEVE...



There is nothing quite like a little adversity in life to make you "bee" all that you can be. Just last Saturday Memphis was hit with 90 to 100 mph winds that uprooted many large trees and snapped large limbs like toothpicks. Needless to say all of that falling wood felled phone and electrical lines all over town. In the midst of total power outage, and no Internet connect our newsletter magician scrambled around continuing to develop this June/July newsletter for you to enjoy, amazing! Bob, Amos, and I were total cowards and headed out for a little unexpected R & R in Middleton while leaving everyone else to deal with everything life could throw at us. At this writing, the shop is still without electricity and Internet, but hopefully we will have them back by the time you read this. If you call and get "non-working number" or E-mail and don't hear back from us in a day, then we are still struggling with 1800's communications and apologize ahead of time for any delay in our response or shipping.

Meanwhile, enjoy our newsletter filled with new items, canvases, stitch guides and more. It is hard to believe all of this "new" can happen in just two months. Have you signed up for a Lori Carter Club (Light Bulbs or the new Seasonal Bird series by Rebecca Wood)? Her guides are very thorough, creative, and sooo cute. Just look at all the new stitch guides available for some Summer stitching. Browse through our Stitch Guide Catalog on our Website to see if there is something to tempt you. We also have a new Home Study Project coming your direction soon. What more could you ask for?

### NEW HOME STUDY

pages 3-4

### NEW STITCH GUIDES

pages 4-6

### HOW'D YOU DO THAT?

page 10

### CUSTOMER GALLERY

pages 14-16

### AND MORE!

*Amy's Golden Strand*

3808 Summer Avenue

Memphis, TN 38122

phone: 901.458.6109

fax: 901.323.4701



# NEW PRODUCTS

## BOHIN MAGNIFIER

No ELECTRICITY needed!!! Magnifiers are a blessing if your eyesight is not as good as it once was. Good light is key to stitching, but it is oh so nice to have an enlarged view of your needle's target. This little jewel of an accessory came in very handy during our recent power-challenged week. Keep in mind that the higher the level of magnification the closer the lens needs to be to your stitching, and the smaller the area that will be visible.

### SPECS

Magnifier diameter: 5"  
Magnification: 2x  
Extra integrated power lens: 1 1/3"  
Magnification: 4x  
Flexible arm length: 18"  
Adaptable clamp grips any support up to 2" thick  
Includes protection storage bag

COST: \$36<sup>00</sup>

## K'S CREATION TRAVEL STAND

Most everyone owns a K's Creations Portable Floor Stand, and while they are all portable, the NEW Travel Base version is lighter weight and breaks down for easier transport. It has a similar setup as the original, but the base is designed in an "H" formation that comes apart into three streamlined pieces. Hug Me Bag Company makes the perfect travel bag for this essential travel companion in many different fabric choices.

The travel base can be purchased separately, but please note: older versions of the K's Portable stand where the vertical rod is welded to the base do not accommodate the new travel version base. Call for more information.



COST:

TRAVEL STAND	\$320 <sup>00</sup>
TRAVEL BASE	\$ 76 <sup>00</sup>
HUG ME BAG	\$ 170 <sup>00</sup>

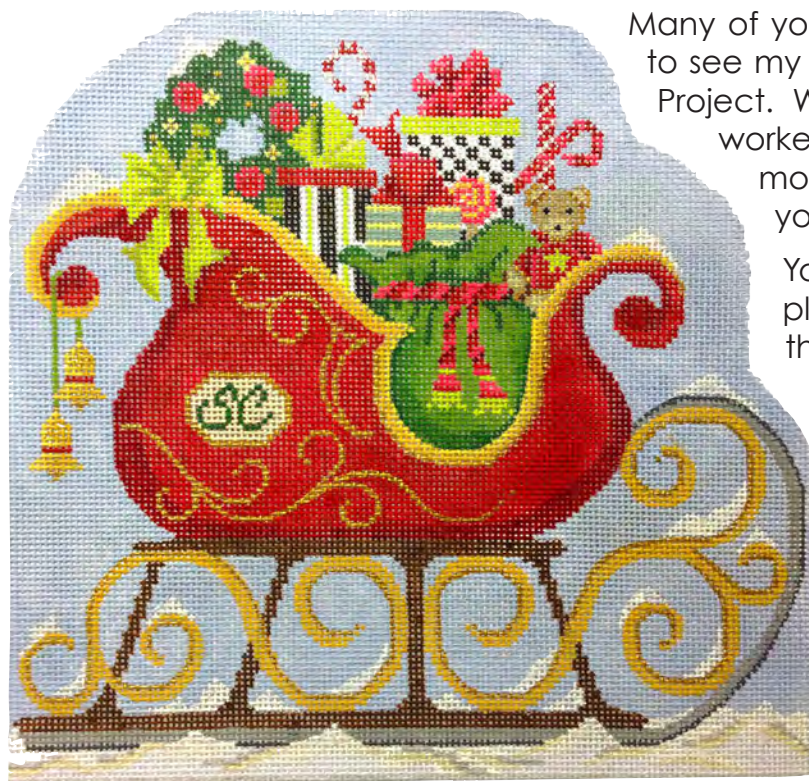




# NEW HOME STUDY!

## ZERO DEGREES NORTH

BY KELLY CLARK



Many of you have been watching Facebook to see my little hints on the next Home Study Project. We still don't have all the details worked out yet, but we do have a few more tempting photos and facts for you to think about.

You would be amazed at the planning and processes that go into these designs...Kelly and I have been burning up the Message board.

"Zero Degrees North" is the North Pole where Santa Claus lives and works to prepare for his Herculean task each year. Kelly is currently working on the additional pieces for the series. So far I have received line drawings of Santa's House, a Christmas Tree, and North Pole sign.

I am actively working on Santa's Sleigh. This Home Study will be offered in two parts and sprawl out over at least 12 kits.

Part One of Zero Degrees North will be 8 canvases (no, not 8 tiny reindeer): Santa Claus, Mrs. Claus, Christmas Tree, Santa's Sleigh, Sack of Presents, Elf (I call him Jeeves), Reindeer, and the North Pole. Each of the 8 characters will come with a thorough guide and a kit filled with all items needed to complete the canvas.





# NEW HOME STUDY!

## ZERO DEGREES NORTH

BY KELLY CLARK



Santa's House will be Part Two and will have four or five kits to complete; instructions will be broken into separate guides to complete the structure and surroundings.

I am amazed and extremely flattered that so many of you have already signed up for this trek to the great North Pole with Kelly and me. We promise to make it magical, fun, and educational for your needle.

# NEW GUIDES

BY AMY BUNGER



### Lotus Kimono

by Lee

18m

8" x 10"

Canvas	\$ 93 <sup>00</sup>
Stitch Guide	\$ 61 <sup>25</sup>
Thread Kit	\$ 86 <sup>25</sup>



### Cookbooks (available June 12)

by Alice Peterson	Canvas	\$141 <sup>50</sup>
18m	Stitch Guide	\$175 <sup>00</sup>
16" x 9"	Thread Kit	\$225 <sup>35</sup>



# NEW GUIDES

## BY AMY BUNGER

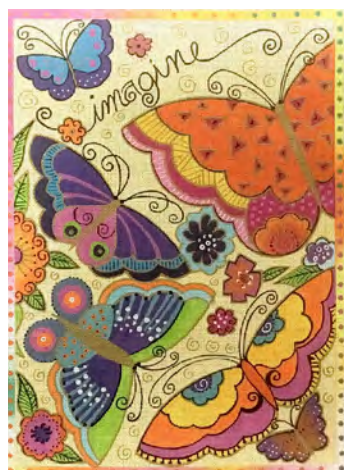
### STITCH GUIDES!

Have a canvas and want to know if Amy has written a stitch guide for it...Our stitch guide catalog is now searchable by Designer and Subject.



**Traditional Flowers in Urn**  
by Colors of Praise  
18m  
20" x 17"

Canvas	\$264 <sup>00</sup>
Stitch Guide	\$175 <sup>00</sup>
Thread Kit	\$395 <sup>85</sup>



### Rainbow Butterflies

by Laurel Burch

from Danji

18m

10" x 14"

Canvas \$220<sup>00</sup>

Stitch Guide \$175<sup>00</sup>

Thread Kit \$309<sup>95</sup>



### Fly Fishing Santa

by Tapestry Tent

from Susan Roberts

18m

13" x 22"

Canvas \$519<sup>50</sup>

Stitch Guide \$245<sup>00</sup>

Thread Kit \$493<sup>60</sup>



### Mr. and Mrs. Frankie

by Gayla Elliot

18m

6" x 4"

Canvas \$ 44<sup>00</sup>

Stitch Guide \$ 35<sup>00</sup>

Thread Kit \$ 79<sup>40</sup>



### Birdfeeder (available June 12)

by Maggie

18m

8" x 11"

Canvas \$139<sup>00</sup>

Stitch Guide \$105<sup>00</sup>

Thread Kit \$142<sup>85</sup>



### Cornucopia (available June 12)

by Melissa Shirley

18m

15" x 13"

Canvas \$363<sup>00</sup>

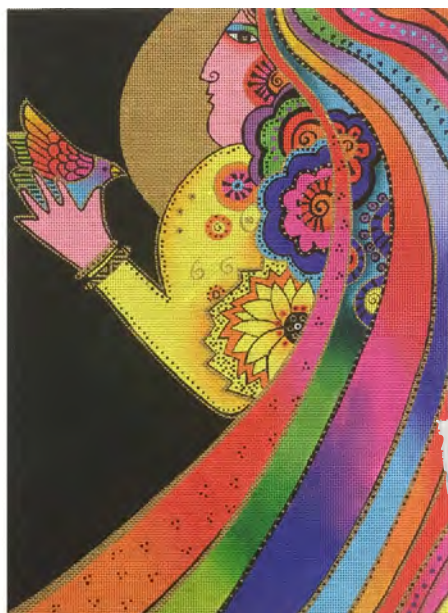
Stitch Guide \$140<sup>00</sup>

Thread Kit \$285<sup>35</sup>



# NEW GUIDES

## BY AMY BUNGER



**Moon Woman**  
by Laurel Burch  
from Danji  
18m  
10" x 14"

Canvas	\$209 <sup>00</sup>
Stitch Guide	\$210 <sup>00</sup>
Thread Kit	\$334 <sup>00</sup>



**Elephants in Blue**  
by Patti Mann  
13m  
14" x 14"

Canvas	\$198 <sup>00</sup>
Stitch Guide	\$105 <sup>00</sup>
Thread Kit	\$246 <sup>75</sup>



**Pheasant**  
by DJ Designs  
13m  
16" x 16"

Canvas	\$279 <sup>50</sup>
Stitch Guide	\$105 <sup>00</sup>
Thread Kit	\$285 <sup>50</sup>



**Mermaid Stocking**  
by Tapestry Tent  
from Susan  
Roberts  
18m  
13" x 22"

Canvas	\$437 <sup>50</sup>
Stitch Guide	\$227 <sup>50</sup>
Thread Kit	\$406 <sup>00</sup>



**Cardinals in Wreath**

by Melissa Prince	Canvas	\$165 <sup>00</sup>
18m	Stitch Guide	\$ 96 <sup>25</sup>
13.5" x 13.5"	Thread Kit	\$263 <sup>00</sup>



# 2017 HOME STUDY

## 4TH OF JULY BANNER

The incredible 4th of July Banner designed by Melissa Shirley is finished. The fourth and final kit finishes the last two apples ("L" and "Y") in the line up. The letters stay pretty much the same, but the quilt designs were loads of fun to design. There are swirling hearts between checkered hearts on "L" and Military Stars on "Y." Just a touch of beading and the addition of a heart-shaped American Flag button from Just Another Button Company made the "Y" apple come alive.

Final kits will be mailed in just a few weeks.

This project has been a joy to work from start to finish and I am sorry to see it end. I will be proud to display mine...but...the final decision is how to finish it. I am leaning toward a 3-D boxed design on wooden apple feet (found by a good friend). Send us your ideas of where and how your 4th of July Banner will live when it is finished?



**4th of July Banner**  
by Melissa Shirley  
18m  
22.5" x 5"

**Kit #1**  
Border & Background  
Early January

**COST:** \$331<sup>75</sup>  
canvas, guide, & threads

**Kit #2**  
"4th of"  
Early March  
**COST:** \$64<sup>00</sup>

**Kit #3**  
"JU"  
Early May  
**COST:** \$65<sup>00</sup>

**Kit #4**  
"LY"  
Early July  
**COST:** \$61<sup>25</sup>



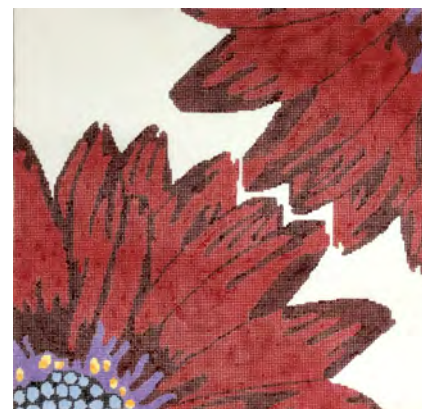


# NEW CANVASES

THEY CAME TWO BY TWO...



We were tempted by two (or four!) new designs by each of these designers. You can enjoy the large florals of Jean Smith, the new angels by Painted Pony, the colorful abstracts by Voila, the overhead view of the lives of ladies by Patti Mann, or the folk-art landscapes of Mary E. Charles.





# PICK YOUR POISON

Our Spring Pick Your Poison Class is sold out, but there is still room in the Fall class. Amy is working on a custom guide for each of three new canvases found at the January market, and will pull all of the threads, beads, and found objects needed to finish each one. These classes are slightly larger at 12 to 14 students and you must choose at least one of the canvases being offered for the class. Lunches and beverages will be included each day of this 3-day class.

## PICK YOUR POISON CLASS

October 12th thru 14th, 2017

*Deadline for canvas selection*

*July 1st, 2017*

**Class Fee:** \$450<sup>00</sup> per person  
\$100<sup>00</sup> non-refundable deposit due at sign up

**REMEMBER,  
YOU CAN NOW SIGN  
UP FOR CLASSES  
ONLINE!**

## CANVAS CHOICES:

### Bergama Upholstery

by CanvasWorks, 18m, 14.5" x 14.5" \$330<sup>00</sup>

### Decisions, Decisions

by Sandra Gilmore, 18m, 15" x 15.5" \$286<sup>00</sup>

### Moon Gazer

by Brenda Stofft, 18m, 7" x 16.5" \$231<sup>00</sup>

You are welcome to purchase the canvas from your local needlepoint shop but make sure that your canvas is painted



on #18 mesh as in some cases the canvas is available in different sizes. If it is not on #18 mesh, the stitch guide will not suit your canvas. Please let us know in advance if you intend to bring your canvas to class.

Stitch Guides: TBA  
Thread Kits: TBA





# HOW'D YOU DO THAT?

## MESSY BASKETWEAVE

Messy Basketweave is a neutral stitch with no pattern, it is Basketweave after all. It should have a short, even, loose loop on the surface of the canvas, like a looped carpet. I don't know who first came up with Messy Basketweave. Like many stitches, it could have been a happy accident when trying something else. Messy Basketweave is worked by not pulling your stitches snug to the canvas on the downstroke of working Basketweave. This sounds easier than it is to work. Anchoring your threads can be tricky, you need to start with an In Your Path Waste Knot (see page 69, *Mysteries of Needlepoint Chapter 2*) and finish by pulling your thread tails up in your path so that the thread will be caught on the back of the canvas or anchor under OTHER stitches. If you run a needle under the Messy Basketweave on the back of the canvas, you will tighten your loops on the surface.

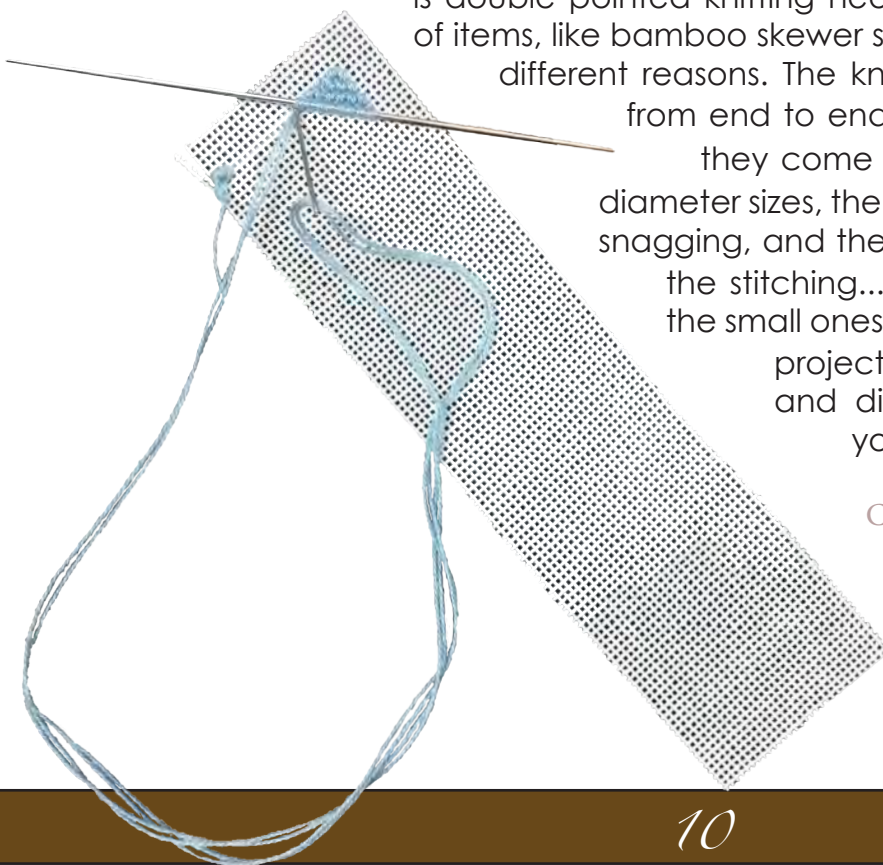
If you are unfamiliar with needlepoint, you might be trainable to not tighten your stitches, but that might be a bad habit to get into for future stitching. If you are familiar with Basketweave, you will automatically pull the stitches tight either on the downstroke or on the upstroke of the next stitch. An easy way of preventing that automatic tightening is to use a spacer. The spacer needs to be the same size from end to end, no tapering, and it needs to be smooth to slide out from under the stitching when you move on in the pattern. The best spacer I have found to use to hold a consistent loop size, that still slides out easily,

is double pointed knitting needles. I have tried a wide variety of items, like bamboo skewer sticks, that just weren't my favs for different reasons. The knitting needles are the same size

from end to end (except for the last little taper), they come in different lengths and different diameter sizes, the surface is very smooth to prevent snagging, and they will slide out from either end of the stitching...PERFECT! We have a few sets of the small ones I have enjoyed using on different projects, but for a large variety of length and diameter you might want to visit your local knit shop.

COST:

INOX KNITTING NEEDLES \$5<sup>00</sup>





# TOO TWEET!

## A NEW BIRD BASED CLUB



For our backyard bird lovers, these delightful Rebecca Wood monthly/seasonal birds, with stitch guides by Lori Carter, are the subject of our next club.

Beginning in August and running 4 months, each bird will be representative of a season. We'll start with the Spring Bluebird, moving into Summer with the jewel-toned Hummingbird, then the Green-Winged Partridge among the autumn leaves for Fall and finishing the series with the beloved Cardinal for Winter.

### SPRING BIRD COST:

canvas \$55<sup>00</sup>  
 stitch guide \$20<sup>00</sup>  
 threads \$31<sup>25</sup>



If interested in participating  
 call or email us at the shop:  
 901-458-6109  
 amys3808@aol.com



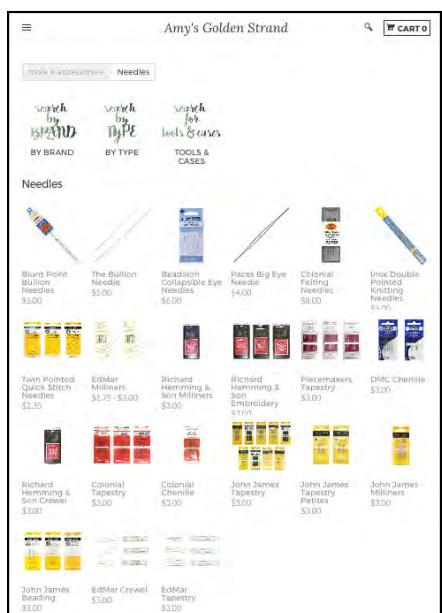
# A LIGHT-HEARTED CLUB



## HOW MANY STITCHERS DOES IT TAKE TO CHANGE A LIGHTBULB?

Our Light-hearted Club is heating up now with Kit #2 Jaunty Snowman ready to go. Each canvas is a quick and easy weekend stitch. This club, with guides by Lori Carter, introduces several new fibers and a new technique or two. Featuring five of Associated Talents light bulb series, there is plenty of time to stitch all and have finished by Christmas. Contact us if you are interested in brightening your summer with this illuminating club.

## SEEN OUR WEBSITE LATELY?



Our new website continues to grow as we add more products weekly. All Tools & Accessories are now listed, which means that you can find any and all accessories that you need for your stitching. From stretcher bars to bags to scissors and all types of needles. We will update our Home Study page with Zero Degrees North as soon as all information is available.

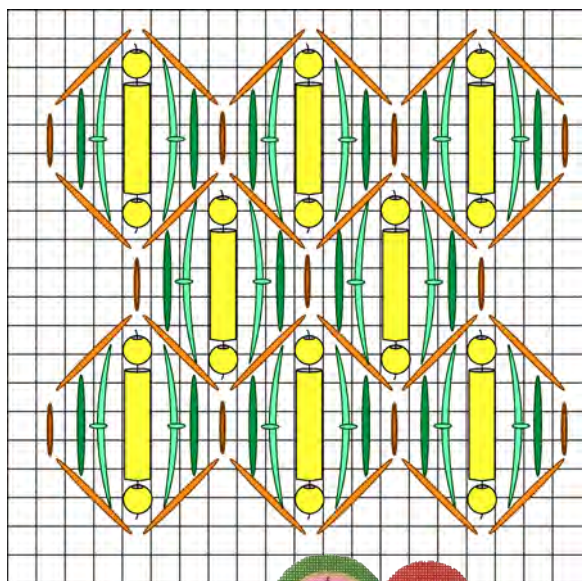
Please continue to check the website regularly and don't hesitate to contact us with any feedback.



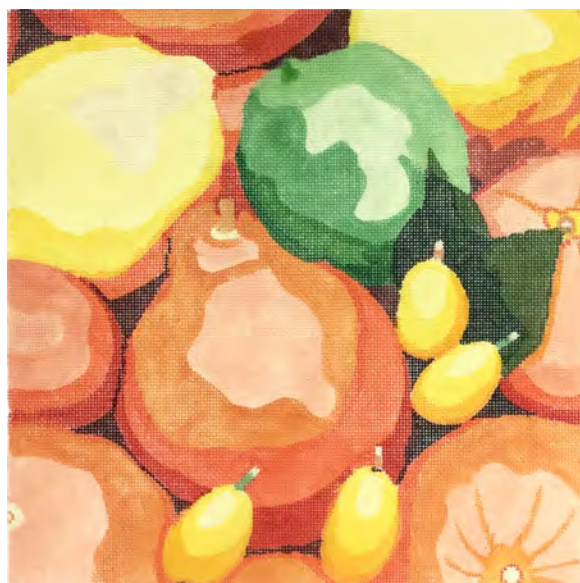
# STITCH OF THE MONTH

## BEADED HONEYCOMB

Beaded Honeycomb can be very dressy, so look for elegant places to use it such as: fabrics, dragonfly wings, ornaments, or in geometric designs. Another excellent idea might be to use this as an element in medium to large areas of stylized fruits, vegetables, or flowers like the designs by Jean Smith.



Start this stitch working the vertical straight stitches diagrammed in dark green. This is an easy component to the stitch pattern to build the pattern. The tied stitches, diagrammed in light green, can be worked next inside brackets of straight stitches. Work the Honeycomb Blackwork, diagrammed in gold, around the previous stitches. The strings of beads, diagrammed in yellow, can be attached last. On #18 mesh I love the idea of using Gold Sundance Twisted Bugle Beads for the long rectangular beads adding one or more gold seed beads at the ends. You can adjust the number and size of beads to fill the length available on any mesh canvas. If you use Size 11 beads you may only have room for one on either end, but if you use Size 14/15 beads you might have room for two or three beads on the ends. Sink your beading thread in either hole inside the Honeycomb, as shown in the diagram, or use the shared holes at the pointed top and bottom of each honeycomb shape.





# CUSTOMER GALLERY



**Patchouli**  
by Tony Minieri  
stitched by Karen Jetton



**Santa and Critters Stocking**  
by Liz Goodrick-Dillon (Tapestry Tent)  
distributed by Susan Roberts  
stitched by Jamie Thomas  
stitches and threads suggested by Lori Carter

**The Crone**  
by DreamHouse Ventures  
stitched by Pam Lemire  
stitched with suggestions from Amy Bunger during Rent Amy Day



# CUSTOMER GALLERY



**The Twelve Tribes**  
 canvas by Rishfeld Designs  
 stitched by Karen Jetton  
 stitch guide by Donna LaGanga  
 (as found in *Needlepoint Now*)

**Horse - Traditional Nativity**  
 by Melissa Shirley  
 stitched by Diane Schoenrock



**Halloween Strawberries**  
 by Ann Hanson from Barbara's Needlepoint  
 stitched by Patricia Wakefield  
 finishing by Barbara's Needlepoint



# CUSTOMER GALLERY



**Blue Elephants**

by Patti Mann

stitched by Suzy Moore

stitch guide by Amy Bunger



**Gold Stream Kimono**

by Sophia

stitched by Kaye McKaskle

**Easter March**

by Ashley Dillon (Tapestry Tent)

distributed by Susan Roberts

stitched by Kathy Clark

stitch guide by Amy Bunger

